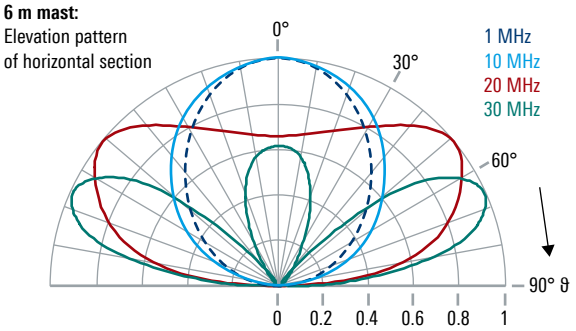
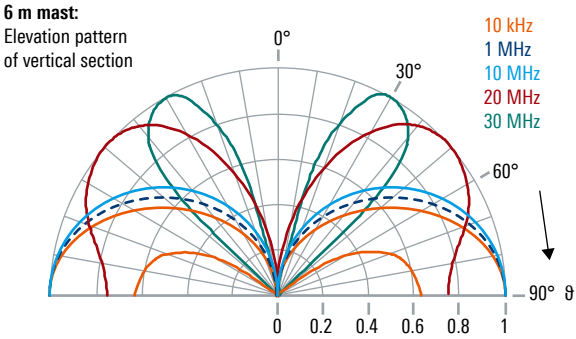


Specifications		
Frequency range	vertical polarization	8.3 kHz to 80 MHz
	horizontal polarization	600 kHz to 40 MHz
Input impedance		50 Ω
VSWR	9 kHz to 20 kHz	< 3
	20 kHz to 80 MHz	< 2
Sensitivity (R&S®HE016 on 6 m mast)	vertical (> 1 MHz)	< -50 dB(μV/m/Hz)
	horizontal	< -30 dB(μV/m/Hz)
IP2	up to 30 MHz	≥ 50 dBm
IP3	up to 30 MHz	≥ 30 dBm
Power supply		21 V to 26 V DC (max. 500 mA)
Power consumption	vertical	max. 160 mA at 24 V DC
	horizontal	max. 340 mA at 24 V DC
Connector		2 × N female
MTBF		> 25000 h
Operating temperature range		-40°C to +65°C
Protection class		IP55
Maximum wind speed	without ice deposit	188 km/h
Dimensions	Ø × H	approx. 2.85 m × 1.4 m (9 ft × 6 ft)
Weight		approx. 5.5 kg (12 lb)

Ordering information	Type	Order No.
Active antenna system	R&S®HE016	4051.8504.02
Recommended extras		
Bias unit	R&S®IN600	4094.3004.x2
Mast, length: 6 m, pluggable	R&S®KM011	0273.9116.02

Typical radiation patterns



Typical inherent noise compared with different standard noise environments

